



Emergency Preparedness and Response to Recent Wind Event, Power Outages, and Wildfires

Calleguas Purveyor Managers Meeting
January 23, 2025



Normal Operations

- Receiving imported water from Metropolitan Water District of Southern California (Metropolitan).
- Lake Bard Water Filtration Plant (LBWFP) and Las Posas Wellfields offline.
- Managing reservoirs to allow for circulation and turnover.
- Operating distribution system off Southern California Edison (SCE) utility power.



Metropolitan Foothill Feeder Shutdown

- Foothill Feeder shutdown was scheduled on short notice due to corrosion discovered on the 78” raw water conduit feeding Metropolitan’s Jensen Plant.
- In preparation for the Metropolitan shutdown, Calleguas began putting the LBWFP in recirculation mode on December 4 and began injecting into Wellfields on December 16.



Available Resources During the Metropolitan Shutdown

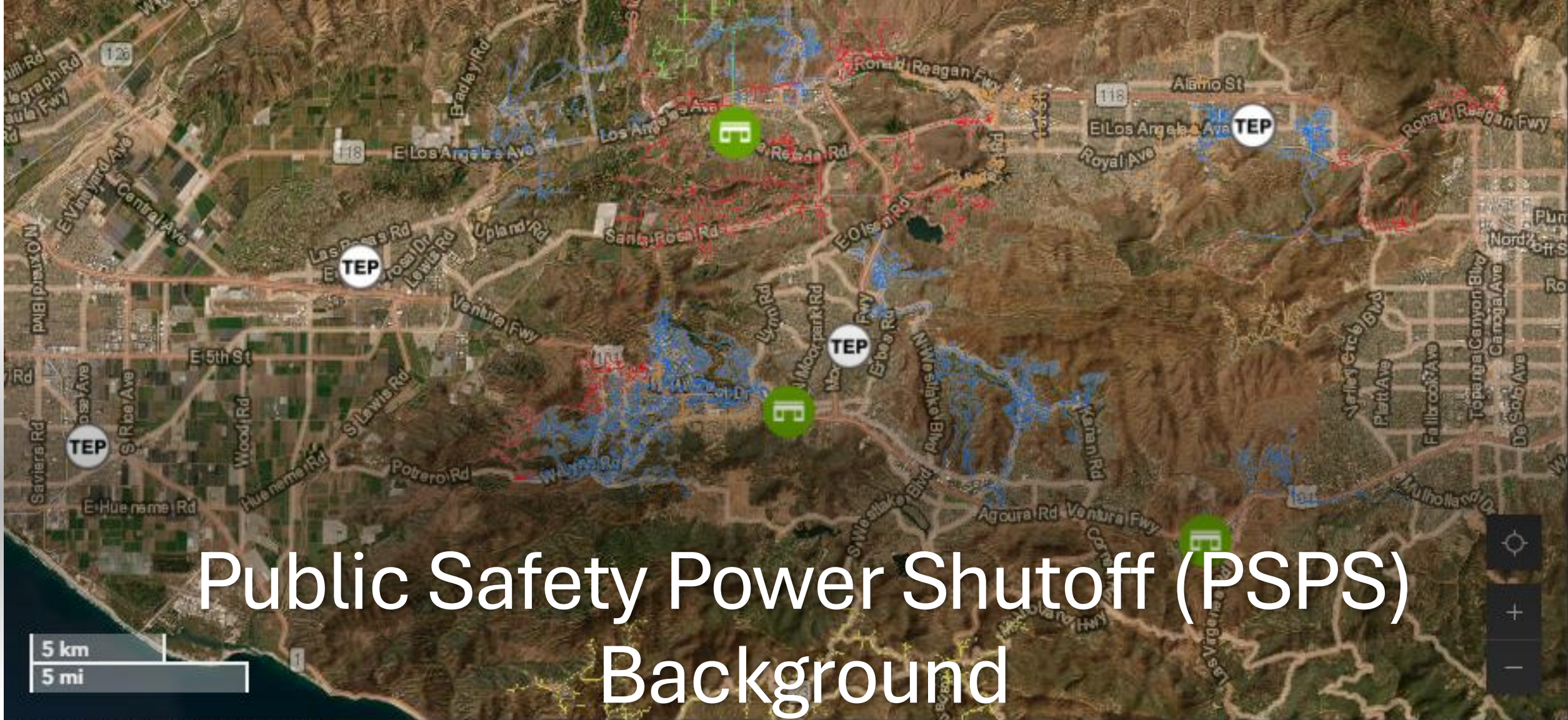
- LBWFP
- Las Posas Wellfield
- Supplemental water deliveries from Los Angeles Department of Water and Power (required by agreement with Metropolitan)
- Metropolitan's Jensen Plant went offline on January 5, 2025.





Operational Modifications in Response to Metropolitan Shutdown

- LBWFP and Wellfield operations required to maintain a reliable water supply.
- Power demands increased due to water production and treatment processes.
- Additional pumping required due to Wellfield production and the operation of Grandsen Pump Station to convey water into Simi Valley.
- Increased demands on staff to operate and maintain LBWFP, Wellfield, and distribution system.



Public Safety Power Shutoff (PSPS) Background

Earthstar Geographics | Esri, HERE

Powered by Esri

Active Incidents Map

Evacuation Terminology

Current Weather

MONITORED CIRCUITS

MAY BE SHUT-OFF WITHIN 24 HOURS

IMMINENT SHUT-OFF

MAY BE SHUT-OFF ANY MOMENT

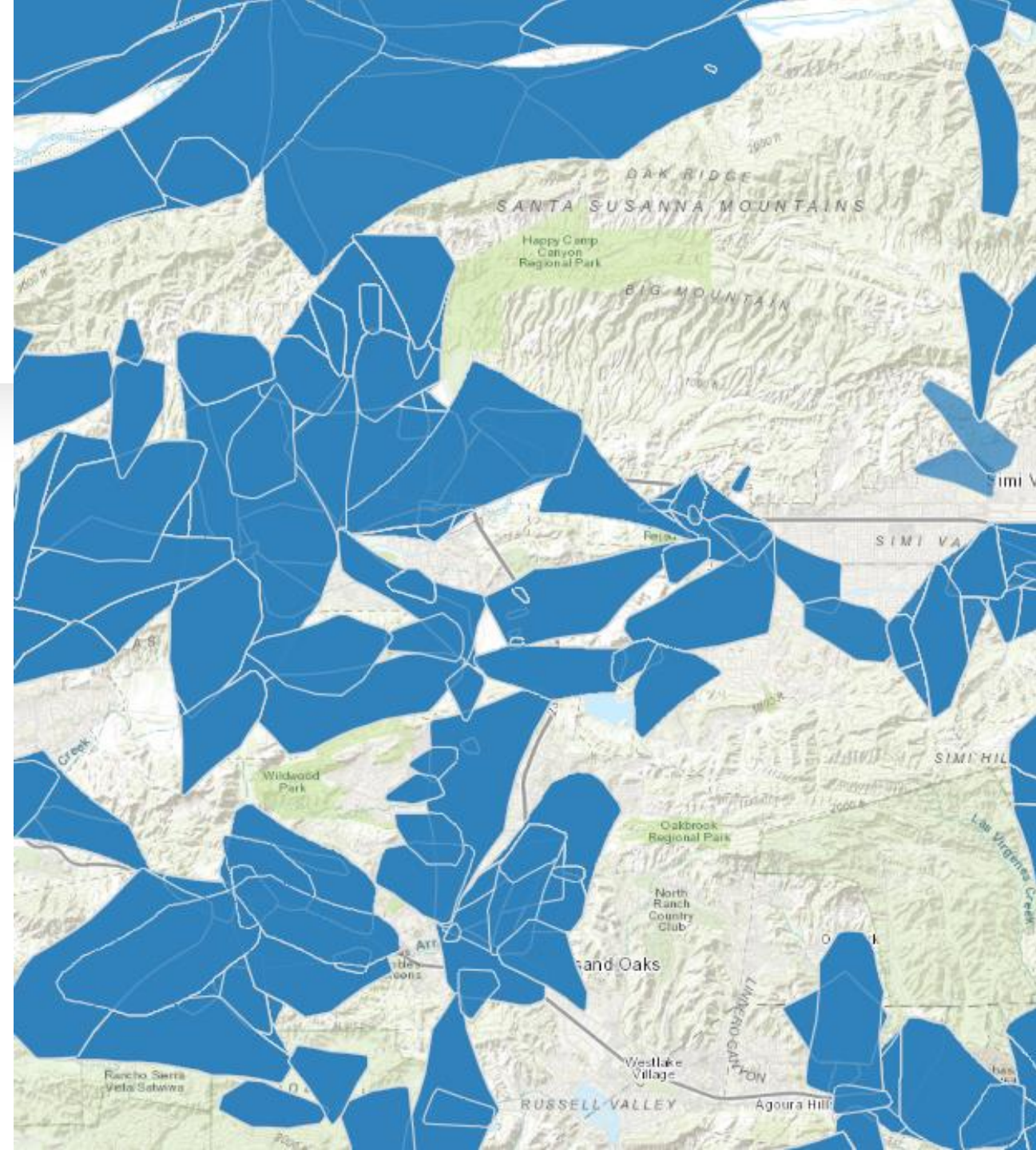
HAZARDOUS

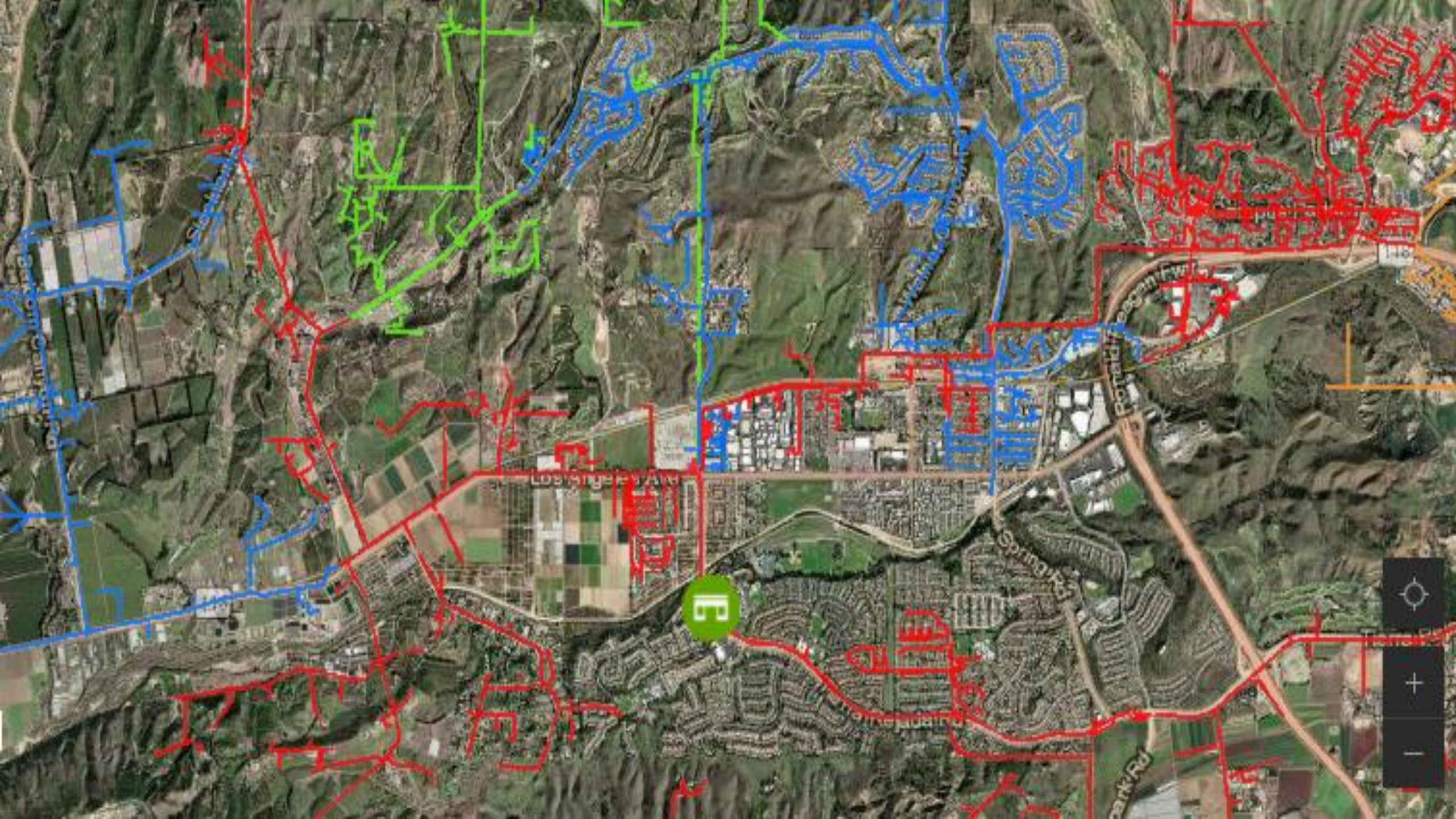
DE-ENERGIZED CIRCUITS

WIND RELATED OUTAGE

PSPS Notifications & Coordination

- Southern California Edison (SCE) issued notifications regarding the potential for upcoming Public Safety Power Shutoffs (PSPS).
- Initially, one circuit was under PSPS consideration.
- By evening on January 5, 68 District accounts across 27 SCE circuits were considered for de-energization.
- First PSPS event to occur in January since 2021.





E



Sunday, January 5

- National Weather Service declared upcoming Santa Ana Wind event to be a Particularly Dangerous Situation (PDS).
 - Widespread, damaging winds.
 - Extremely dry vegetation.
 - Low humidities with little to no overnight recovery.

LIFE-THREATENING & DESTRUCTIVE WINDSTORM !!!

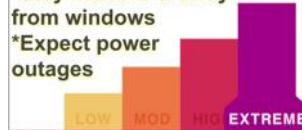
Tues afternoon-Weds morning

EXTREME RISK – Take Immediate Action

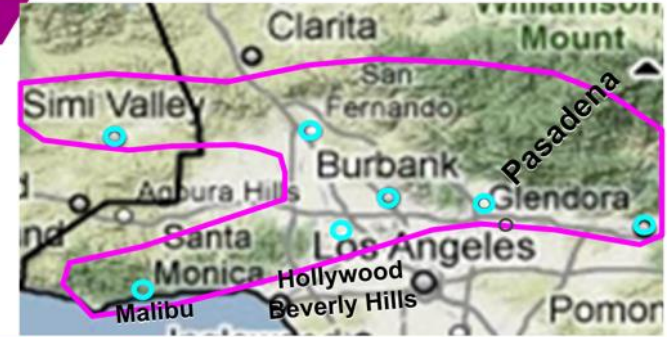
LOCATIONS OF GREATEST CONCERN

Areas within the magenta-outlined area, including...
Highways 118/210 corridors, San Gabriel / Santa Susana / Santa Monica Mountains & Foothills; San Gabriel and San Fernando Valleys

*Stay indoors & away from windows
*Expect power outages



Pasadena, Burbank, San Fernando, Hollywood, Beverly Hills, Simi Valley, Sylmar, Porter Ranch, Altadena, La Crescenta, Malibu



***** Important: Damaging winds also expected outside of magenta-outlined areas *****



weather.gov/LosAngeles

Weather Forecast Office - Los Angeles/Oxnard, CA

Updated: Monday January 6, 2025 at 10:30 am

Follow: [nwlosangeles](https://twitter.com/nwlosangeles)

Listen: NOAA Weather Radio for Latest Warnings and Forecasts

from
NWS Los Angeles/Oxnard



Extreme Fire Conditions Widespread Damaging Winds

Tuesday through Friday

Most of LA and Ventura Counties

Extreme Risk – Take Action

Updated Sunday January 5, 2024

Widespread damaging winds and low humidities will likely cause fire starts to rapidly grow in size with extreme fire behavior

Most of LA and Ventura Counties

Use extreme caution with any potential ignition sources

Widespread damaging wind gusts **50-80 mph**. Isolated **80-100 mph** for mountains/foothills. **Downed trees and power outages**

Stay alert to the forecast and follow instruction from emergency officials. **Ready, Set, Go!** Readyforwildfire.org

Low humidity and very dry vegetation



minor

moderate

major

extreme

@NWSLosAngeles

www.weather.gov/losangeles

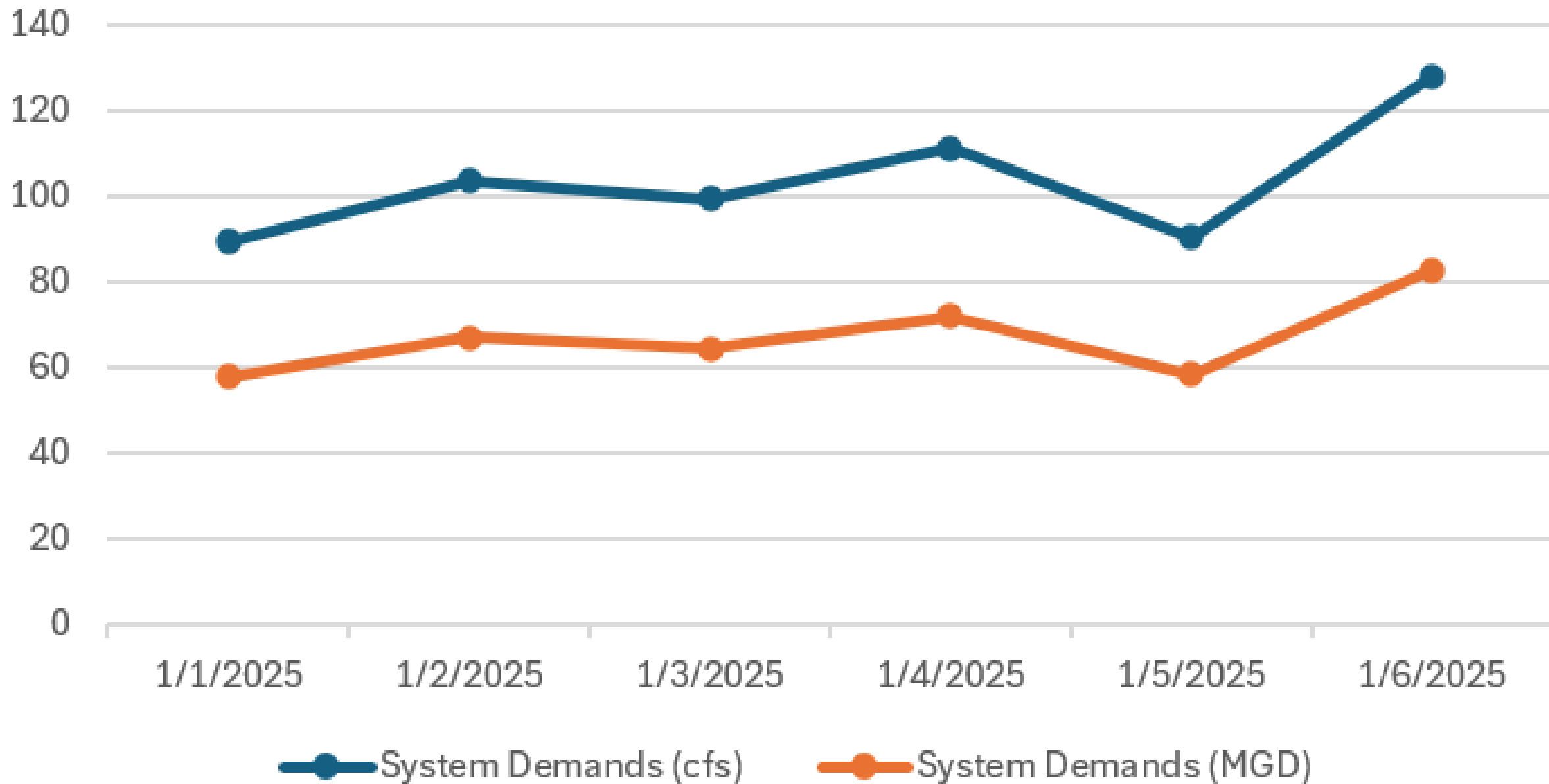


Operational Planning

Actions necessary for successful results:

- Increased internal coordination.
- Tabletop discussion.
- Detailed action plan.
- Creative ideas.
- Focus on purveyors and Ventura County residents having safe and reliable water.

PSPS Impacts on System Demands





Operations Preparation Prior to the Event

Operations staff kept Calleguas's reservoirs full, prioritizing water in storage and deviating from Calleguas's standard reservoir operations procedures.

Partnership with Ventura County Air Pollution Control District

- Permits state that generators may be run for emergency operations or scheduled maintenance.
- Notification of potential PSPS not considered an emergency.
- Calleguas staff reached out to Ventura County Air Pollution Control District (VCAPCD) staff on January 7, 2025, to request authorization to transfer to emergency generators **before** losing SCE power.
- Partnered to redefine guideline for potential PSPS as an emergency.
- VCAPCD granted Calleguas approval to operate standby generators without counting toward permit maintenance hours, avoiding any penalties.



Ventura County
Air Pollution
Control District

Power Transition

- On January 7, LBWFP and Las Posas Wellfield transitioned onto standby power while in operation, due to the anticipated PSPS event.
- This has never been done before. Power failure could have resulted in a temporary loss of water delivery and a water quality violation.
- The transition onto standby generator power required coordination from all staff to ensure that water deliveries were safe and at reliable quantities to Calleguas purveyors.



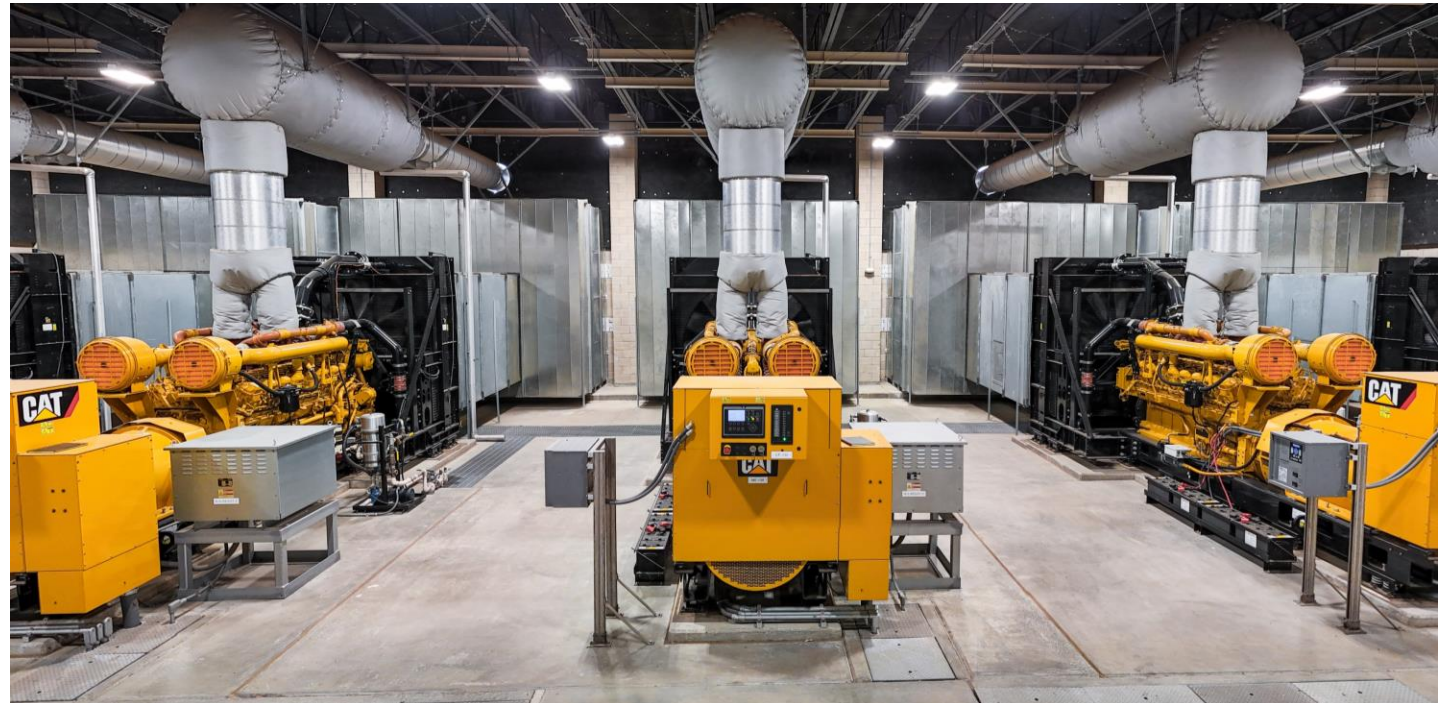


Conejo Standby Generators

- Four 2900 HP Standby Generators.
- Supplies power to LBWFP and other District facilities at Olsen Property.
- Began running during the afternoon of January 7 until the evening of January 16.
- Restarted the morning of January 20 and remain in operation due to additional PSPS activity.

Wellfield Standby Generators

- Five 2900 HP Standby Generators.
- Supplies power to all facilities at Wellfields 1 and 2.
- Ran from the afternoon of January 7 through the morning of January 13.



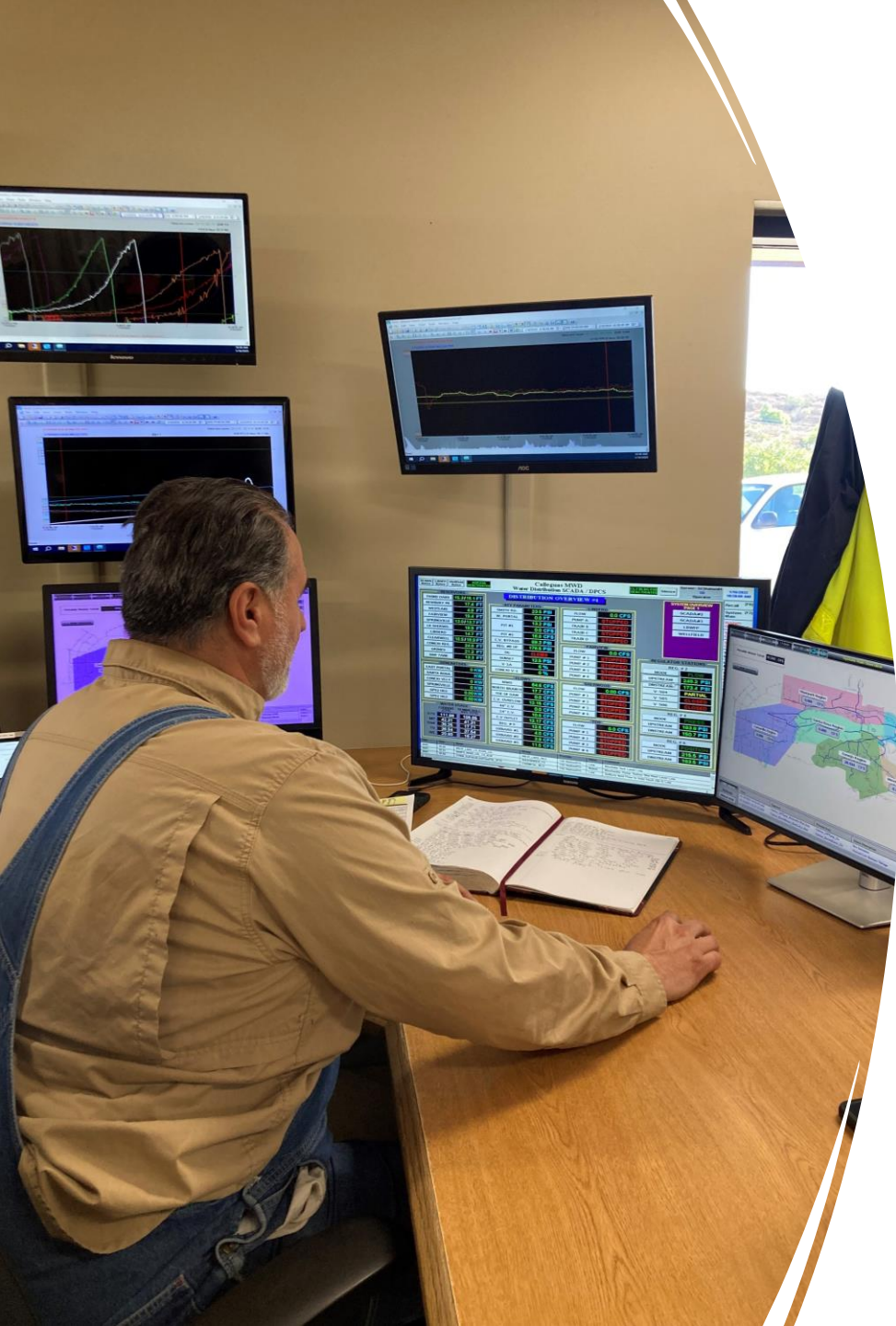


Grandsen Pump Station Standby Generators

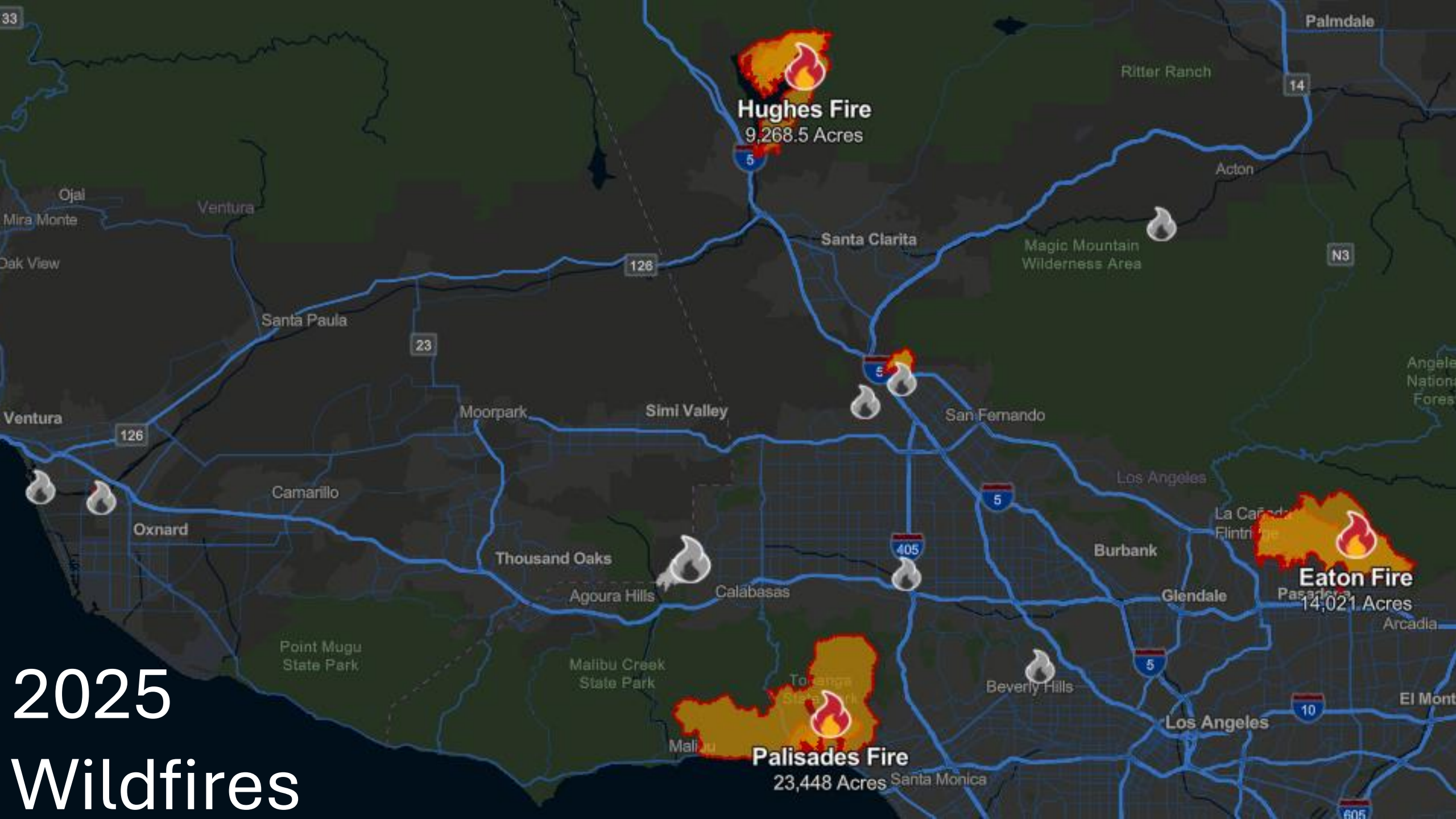
- Two 3700 HP Standby Generators.
- One 750 HP Standby Generator.
- Ran from January 7 through January 11.

Communication & Outreach With Purveyors

- During the PSPS event, multiple purveyor service connections lost power followed by communications.
- Anticipating power loss, several purveyors contacted Calleguas operations staff to modify flows and increase storage levels.
- This ensured that water deliveries remained constant.



2025 Wildfires





LA & Ventura County Fires

(January 7-22)

- Palisades
- Eaton
- Hurst
- Lidia
- Sunset
- Woodley
- Olivas
- Kenneth
- Archer
- Auto
- Susana
- Grimes
- Hughes



Public Safety Partner Portal

Overview PSPS planning PSPS events User Guide User Access

Calleguas Municipal Water Dist Water and Wastewater Systems Sector Critical Infrastructure



List of Critical Infrastructure customers who are in-scope for current PSPS event

Details

[VC Situation Update] Santa Ana Wind Event with PDS - 1-20-25 Report#2



Ivan Rodriguez via VC Situation Update <updates+ivan.rodri

To VC Situation Update



Mon 6:41 PM

Retention Policy 60DayRetention (60 days)

Expires 3/21/2025

i You forwarded this message on 1/20/2025 8:17 PM.
If there are problems with how this message is displayed, click here to view it in a web browser.
Click here to download pictures. To help protect your privacy, Outlook prevented automatic download of some pictures in this message.

- PDS Red Flag Warning.png 2 MB
- Impacts and Actions.png 1 MB
- Extended Red Flag Conditions.png 1 MB

Good evening,

The National Weather Service is forecasting an extended period of [Red Flag Conditions](#) across much of Ventura County through at least Thursday. This includes a **Particularly Dangerous Situation (PDS) wind event**, which will remain in effect until 10:00 AM on Tuesday. Conditions will be extremely dry throughout this time, with daytime humidity levels ranging between 5% and 15% and little improvement overnight. Daytime high temperatures are expected to range from the upper 60s to low 70s. The combination of very dry vegetation and prolonged extreme fire weather conditions will create a heightened risk of rapid fire spread and erratic fire behavior for

Situation Reports & Updates

- SCE Correspondence & Public Safety Partner Portal.
- Ventura County Sheriff's Emergency Services coordination calls and operational area updates.
- Metropolitan situation reports and virtual Emergency Operations Center (EOC) coordination.
- Association of Water Agencies of Ventura County network coordination.



UC San Diego



Supporting Firefighting Efforts

- Firefighting “dip tank” located at Wellfield 2 near Moorpark.
- Provides water supply for helicopters in an area where there are limited surface water supplies.
- Ventura County Fire Department to continue performing work to install associated components in coordination with District.



Mutual Aid

- Through the California Water/Wastewater Agency Response Network (CalWARN), Calleguas received a request to provide mutual aid in Altadena.
- Work included dewatering a reservoir damaged by the Eaton Fire.
- Metropolitan staff were onsite managing the project.



Mutual Aid

- System Maintenance Supervisor and three crew members deployed with required equipment and personal protective equipment at 3:30pm on January 15.
- Staff returned to Calleguas at 1:10am on January 16 after completing assigned work.



An aerial photograph of a large reservoir with a dam. The water is a deep blue, and the surrounding land is a mix of brown and green vegetation. In the background, there are rolling hills and a town. The sky is clear and blue.

District Resiliency

- Throughout extreme weather conditions, PSPS events, and wildfires in January, interdisciplinary teams responded to ensure uninterrupted operations and water service to 19 retail purveyors, approximately 650,000 Ventura County residents, and agencies requesting mutual aid.
- These labor-intensive events required extraordinary vigilance, coordination, and physically and mentally demanding field tasks that ensured the safe and reliable operation of Calleguas's treatment and distribution systems.

- +
 - • Emerging Issues
& Policy
Proposals





The New York Times

‘Completely Dry’: How Los Angeles Firefighters Ran Out of Water

As wildfires roar into residential neighborhoods, firefighters in California and elsewhere are finding that water systems can’t keep up with the demand.

Los Angeles Times

CLIMATE & ENVIRONMENT

Why hydrants ran dry as firefighters battled California’s deadly fires

No ‘water system in the world’ could have handled the LA fires. How the region could have minimized the damage



CLIMATE AND ENVIRONMENT

Fact check: What really happened with the Pacific Palisades water hydrants?

What We Know About Why L.A. Fire Hydrants Ran Dry During Wildfires

When fire hydrants ran dry during the Pacific Palisades fire, it sparked a wave of anger and even misinformation. Here’s how L.A.’s water system works and what we know about why the hydrants ran out. Photo: Illustration: Annie Zhao

By Wall Street Journal

January 10, 2025 ⌚ 4:53

“...ongoing reports of water pressure to...hydrants... unavailability of water supplies...deeply troubling...”

“We need answers to how that happened.”



OFFICE OF THE GOVERNOR

January 10, 2025

Janisse Quiñones
CEO and Chief Engineer, Los Angeles
Department of Water and Power

Mark Pastrella
Director, LA County Public Works

Ms. Quiñones and Mr. Pastrella,

From the moment firestorms erupted in Los Angeles County on Tuesday, January 7, it was clear our public infrastructure would be put under tremendous strain. The horrific hurricane-force winds and dry conditions have produced an unprecedented urban-wildlands disaster that has pushed all of our resources to the limits.

The ongoing reports of the loss of water pressure to some local fire hydrants during the fires and the reported unavailability of water supplies from the Santa Ynez Reservoir are deeply troubling to me and to the community. While water supplies from local fire hydrants are not designed to extinguish wildfires over large areas, losing supplies from fire hydrants likely impaired the effort to protect some homes and evacuation corridors.

We need answers to how that happened. Therefore, I have directed state water and fire-fighting officials to prepare an independent after-incident report examining the causes of lost water supply and water pressure in municipal water systems during the fire events, and to identify measures that local governments can implement to provide adequate water supply for emergency response during future catastrophic events.

I request that LADWP and Los Angeles County officials swiftly prepare a comprehensive review examining their local preparation and response procedures to ensure available water supply for emergencies, and document any causes of the loss of water pressure and unavailability of water supplies. I am requesting you fully and transparently share information and records for the state's after-incident review.

I offer the full technical capacity of the State for disaster preparation, response, and recovery, as well as to examine local public agency actions throughout this catastrophe and to learn from the lessons of this tragedy.

Thank you,

A handwritten signature in black ink, appearing to read "Gavin Newsom".

Gavin Newsom
Governor of California

Cc: Karen Bass, Mayor of Los Angeles

Governor's Directives

Directs state water and firefighting officials to prepare independent after-action report

State: Examining causes of lost water supply and water pressure in municipal water systems during fire events and identify measures local governments can implement to ensure adequate water supply during future emergencies

County: Requests LADWP and LA County officials swiftly prepare report re: firefighting prep and response procedures to ensure water for emergencies and document causes of pressure loss and lack of supply

*Asm. Steve
Bennett proposal:*

*Emergency Prep &
Backup Power
Requirements for
Water Suppliers*

Stems from
Mountain Fire

Concern about a
lack of water supply
for firefighting efforts

Bill Proposal Language

The bill is in its early stages and can be modified as productive input is received

No bill formally introduced yet (deadline is Feb. 21)

Asm. Bennett engaging in proactive stakeholder outreach

Current provisions

- 1) Water tanks that service high wildfire risk areas be topped off when notified by Ventura County Office of Emergency Services.
- 2) Backup power be promptly available to keep water pumps operating.
- 3) Ventura County Fire Department to annually inspect critical water facilities to ensure they are as fire resistant as is reasonably possible.
- 4) A report on the topping off efforts and backup power when residential losses from a wildfire exceed a certain dollar figure.

Ventura County Supervisor Jeff Gorell (District 2) Proposal for SCE Alternative

- Exploring a not-for-profit Municipal Utility District for Ventura County – public alternative to SCE

"Southern California Edison has repeatedly demonstrated that its business model—a for-profit, regulated corporation—fails to meet the basic standards of transparency, communication and service reliability that our community deserves. Driven by profit motives rather than the public good, this model lacks the accountability and responsiveness that a municipally driven utility could provide."

Specific Concerns About SCE

Ineffective communication and lack of transparency with public re: duration of power outages

Not accountable to public because it's a for-profit corporation

Insufficient / no responses to Ventura County officials on critical matters

Board of
Supervisors
Proposal
1/15/25 –
Passed 5-0

Staff to evaluate the feasibility, costs and benefits of establishing a municipal utility, considering:

- Case studies from other California communities.
- Legal and regulatory requirements.
- Potential service improvements and cost savings for residents and businesses.
- Governance structures that ensure transparency and accountability.

A photograph of three utility workers standing in front of a white utility truck. The workers are wearing high-visibility neon green safety vests over dark long-sleeved shirts and blue jeans. They are also wearing blue baseball caps and sunglasses. The truck has a white cabinet on the back with a fire extinguisher mounted on it. The background shows trees and a clear sky. The word "Questions?" is overlaid in white text in the center of the image.

Questions?