

Grandsen Pump Station Hydroelectric Generating Facility Public Meeting

September 20, 2011



Agenda

- Presentation
 - Conduit Exemption Process
 - Grandsen Hydro
- Public Comment
- Site Visit

Purpose of the Public Meeting

- Solicit input from public, agencies, and other parties interested in Grandsen Hydro.
- Comply with FERC requirements for public outreach to apply for a Conduit Exemption for Grandsen Hydro.

Conduit Exemption Process

- ✓ Issue consultation letter to stakeholders.
- ✓ Publish public hearing notice in local paper.
- ✓ Provide FERC with written notice of the meeting and an agenda.
- ❑ Hold public hearing, including site visit.
- ❑ Receive comments from agencies.
- ❑ Finalize study plans and perform studies (if necessary).

Conduit Exemption Process

- For complex projects, the process allocates time for second and third stage consultation.
- These stages of consultation are only necessary when natural resource issues need to be resolved or additional studies need to be conducted.
- Because of the lack of potential resource issues associated with Grandsen Hydro, Calleguas is requesting stakeholder approval to waive second and third stage consultation.
- This will allow Calleguas to proceed directly to filing of the application for exemption.

Conduit Exemption Process

- ❑ Provide stakeholders with draft application for exemption.

<http://www.calleguas.com/projects/1stConsultationApplicationforExemptionDraft.pdf>

- ❑ Receive comments from stakeholders.
- ❑ Submit exemption application to FERC.
- ❑ Make application materials available for public review at Calleguas' offices and public library.
- ❑ Publish a notice of application filing twice in a daily or weekly newspaper.
- ❑ Provide FERC with documentation proving that this public notice has been issued.

Conduit Exemption Process

- ❑ FERC reviews application.
- ❑ Once FERC accepts the application for filing, FERC notifies stakeholders and publishes in the newspaper.
- ❑ Public comment period.
- ❑ Applicant submits reply comments if necessary/appropriate.
- ❑ FERC conducts environmental analysis.
- ❑ FERC issues order granting/denying exemption.

Agencies/Parties Consulted

- Federal Agencies
 - U.S. Fish and Wildlife Service
 - NOAA Fisheries
 - Bureau of Indian Affairs
 - Federal Energy Regulatory Commission
 - U.S. Army Corps of Engineers
 - U.S. Environmental Protection Agency
- State Agencies
 - California Department of Fish and Game
 - California Environmental Protection Agency
 - Regional Water Quality Control Board
 - California Office of Historic Preservation
 - California Native American Heritage Commission
 - California State Water Resources Control Board
 - California Department of Public Health

Agencies/Parties Consulted

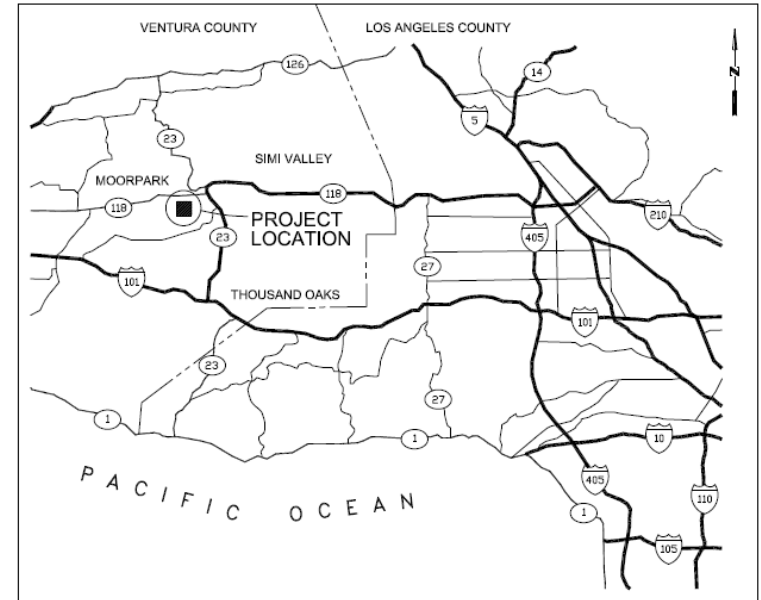
- Local Agencies
 - City of Moorpark
 - County of Ventura
- Other Potentially Interested Parties
 - Friends of the River
 - Hydropower Reform Coalition
 - Planning and Conservation League

Grandsen Hydro

- Grandsen Hydro would allow Calleguas to develop a renewable energy source within existing infrastructure with minimal or no potential impacts to natural resources.
- Calleguas successfully operates four similar existing hydro generators in its system (East Portal, Conejo, Santa Rosa, and Springville).

Grandsen Hydro

- Location is within property of existing Grandsen Pump Station (GPS) and Pressure Regulating Station No. 2 (PRS2) in City of Moorpark.



LOCATION MAP
SCALE: 1 IN. = 20000 FT.

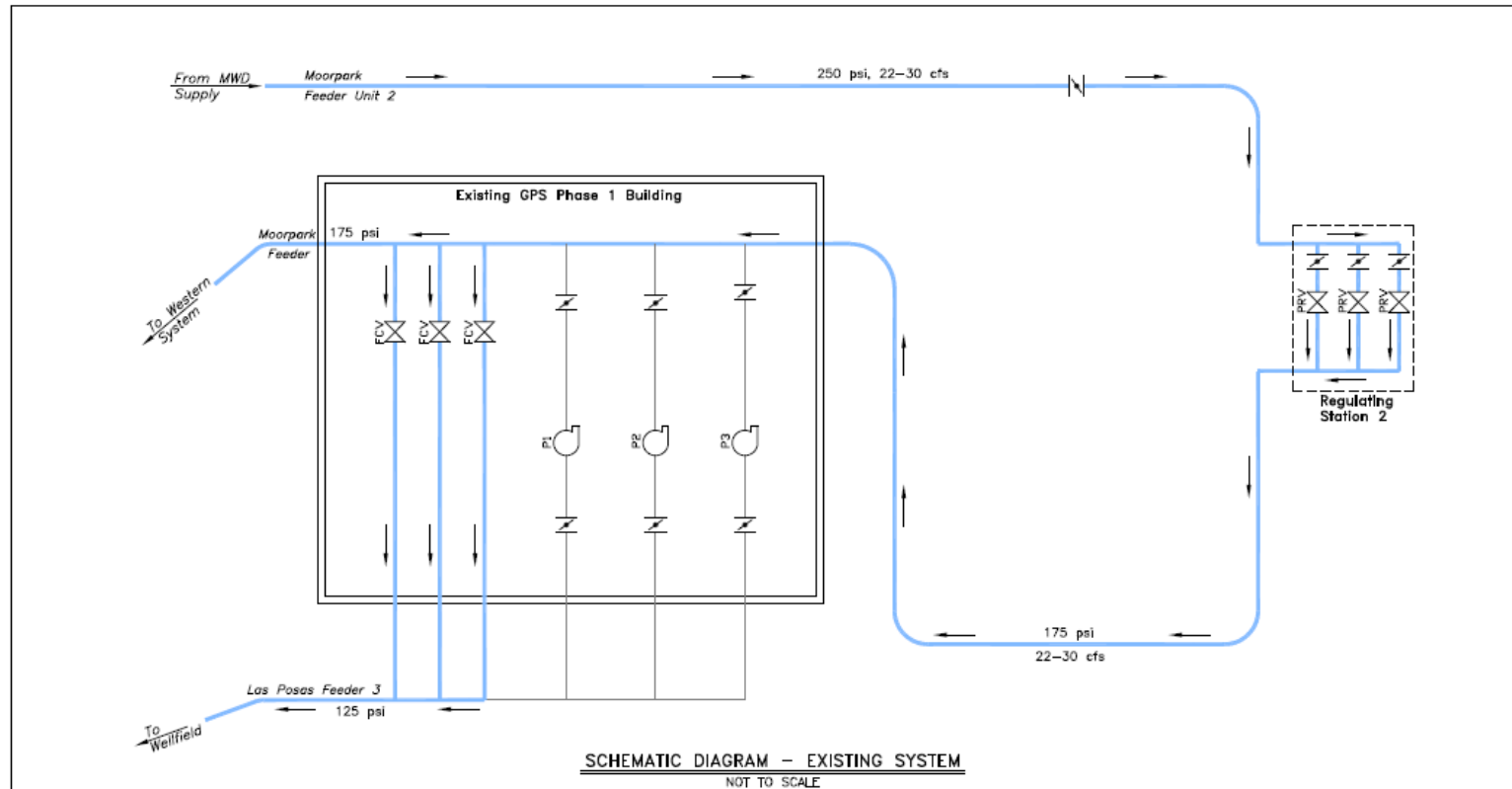
Grandsen Hydro

- Grandsen Hydro will utilize flows within an existing underground water system conduit for the production of power.
- No changes to existing water diversions or deliveries.
- All activities will occur entirely within the GPS site.

Grandsen Hydro

- PRS2 currently reduces high pressure in the Moorpark Feeder before delivering water to the lower pressure zones in the Calleguas system.
- Hydro will tie into the existing 42-inch Moorpark Feeder upstream of a relocated PRS2.
- The new hydroelectric generating station will operate in lieu of PRS2, producing electricity while reducing pipeline pressure instead of wasting that energy.
- When bypassing the hydroelectric generating station, PRS2 will continue to operate as it does now.

Current Operation (No Hydro)

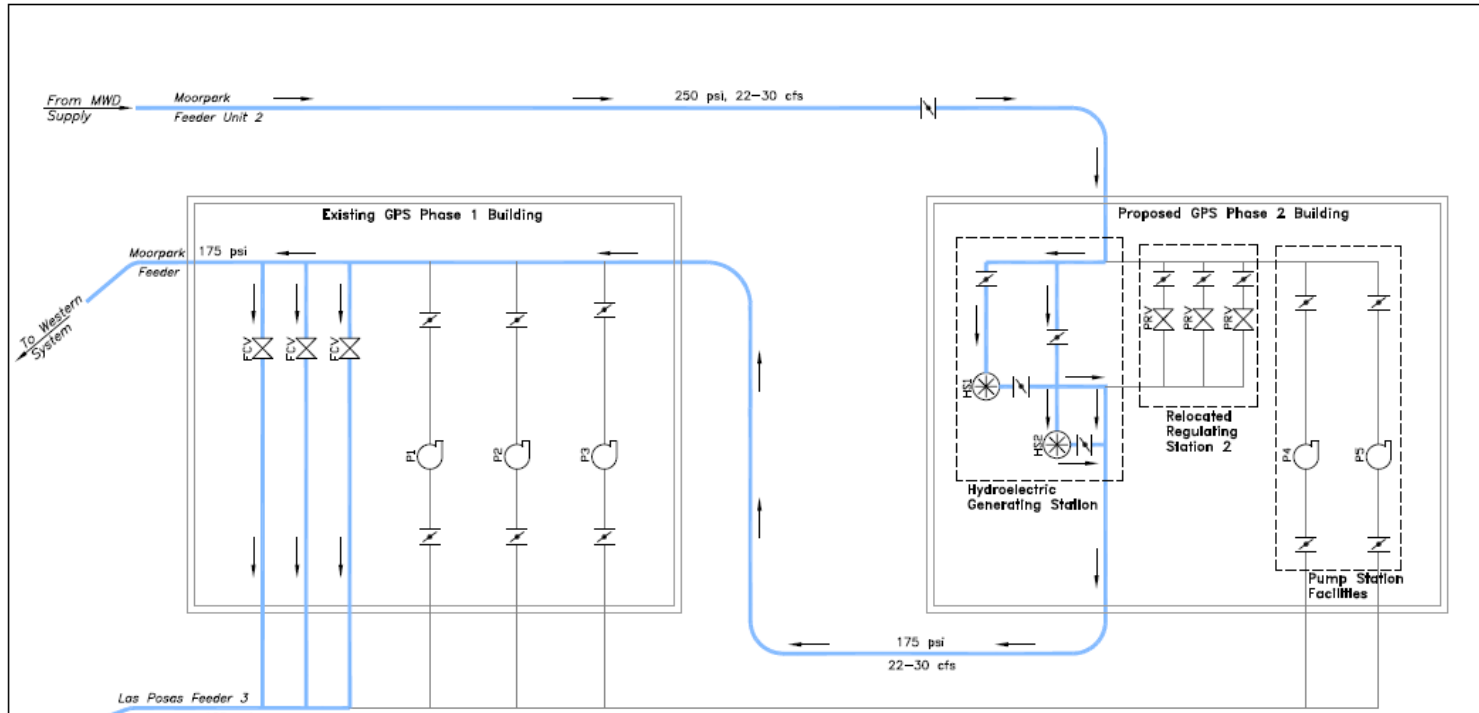


LEGEND:

- FLOW CONTROL STATION
- PRESSURE REGULATING STATION
- PUMP
- ISOLATION VALVE
- FLOW DIRECTION

CALLEGUAS MUNICIPAL WATER DISTRICT		
THOUSAND OAKS, CALIFORNIA		
GRANDSEN HYDROELECTRIC GENERATING STATION		
SCHEMATIC DIAGRAM – EXISTING SYSTEM		
DATE	 PERLITER & INGALSBE CONSULTING ENGINEERS ALFADENA CALIFORNIA	FIGURE
APRIL 21, 2011		3

Future Operation (with Hydro)



SCHMATIC DIAGRAM – HYDROPOWER GENERATION MODE
NOT TO SCALE

LEGEND:


- FLOW CONTROL STATION
- PRESSURE REGULATING STATION
- PUMP (NOT OPERATING UNDER HYDROGENERATION)
- HYDROELECTRIC GENERATING STATION
- ISOLATION VALVE
- FLOW DIRECTION

NOTE:

Hydroelectric generating station only operates when pumps are not operating.

PROPOSED HYDROELECTRIC GENERATING STATION DATA	
No. of Units	Two (Unit 1 & Unit 2)
Turbine	Cornell Model 10 TR2 Hydro Turbine or Equal
Generator	Induction Type, 190 KW, 1800 RPM, 480 VAC, 60 HZ, 3 PH, Continuous Duty

NOTE: Both hydro power generator units are identical.

CALLEGUAS MUNICIPAL WATER DISTRICT THOUSAND OAKS, CALIFORNIA		
GRANDSEN HYDROELECTRIC GENERATING STATION		
SCHMATIC DIAGRAM – HYDROPOWER GENERATION MODE		
DATE APRIL 21, 2011	 PERLITER & INGALSBE CONSULTING ENGINEERS <small>ALFADENA — CALIFORNIA</small>	FIGURE 4

Existing
PRS 2



GPS Phase 1

SCE
Facilities

Future Grandsen Hydro,
Relocated PRS2, and GPS
Phase 2



Grandsen Hydro

- Although Calleguas is planning to construct Phase 2 of GPS concurrent with the relocation of PRS2 and the construction of the hydro, this concurrent construction is due to the cost savings and efficiency associated with having a single contractor working on the site and the projects are not dependent on each other.
- The only new facility necessary for the generation of hydroelectric power is the hydroelectric generating station itself.
- Therefore, the project does not include GPS Phase 2.

Questions?

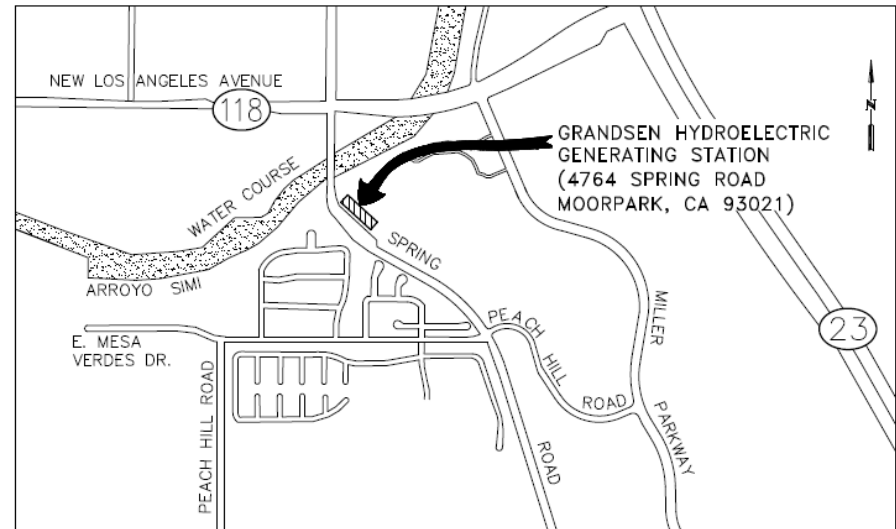


Public Comment



Site Visit

- Site is located at:
 - 4764 Spring Road
Moorpark, California
- Maps available on table outside the Board Room.



VICINITY MAP