



Turnout Automation and Vault Improvements Project

About Calleguas Municipal Water District

Calleguas Municipal Water District (Calleguas) is a special district that distributes water on a wholesale basis to 22 local purveyors, which in turn deliver water to approximately 600,000 people in Ventura County. Calleguas does not deliver water directly to consumers; however, three-quarters of Ventura County residents depend on Calleguas for all or part of their water supply. Calleguas' primary source of water is imported supplies from the State Water Project delivered by the Metropolitan Water District of Southern California.

About the Turnout Automation and Vault Improvements Project

Calleguas delivers water to its retail purveyors via nearly 100 turnouts, which are essentially meter stations. Many of the turnouts are more than 40 years old and have not been upgraded since their initial construction. Currently, the turnouts are equipped with paper circular pen charts that track water deliveries. These charts must be manually collected weekly and then manually interpreted to calculate water usage and bill the purveyors. The project consists of replacing those outdated circular charts and accompanying obsolete electronic equipment with new computer equipment at each of the turnouts. The equipment at each turnout will communicate with computers at Calleguas' 24 hour control center via cellular modem. The project also includes an internet-based interface from which individual purveyors can monitor their water usage in near real-time.



The project also includes replacing concrete pads, access hatches, manholes, and ladders at turnout sites where those facilities are in need of repair or do not meet current safety standards. Additionally, at six locations in Thousand Oaks, additional structural rehabilitation and repair will be performed at the turnout vaults.

The locations of the turnouts involved in this project are shown on the reverse of this page.

What is the project schedule?

Construction is expected to start in fall 2009 and conclude by fall 2011, with construction at each individual site lasting several months. Work hours vary by site and are dependent upon the proximity of residences and the need for traffic control.

Will the project affect my water supply?

The project will not result in any outages or disruptions to water delivery service.

What will the project look like when completed?

The new cabinets will look very similar to the existing ones. Any landscaping, roads, sidewalks or other improvements disturbed by construction will be restored to existing conditions.



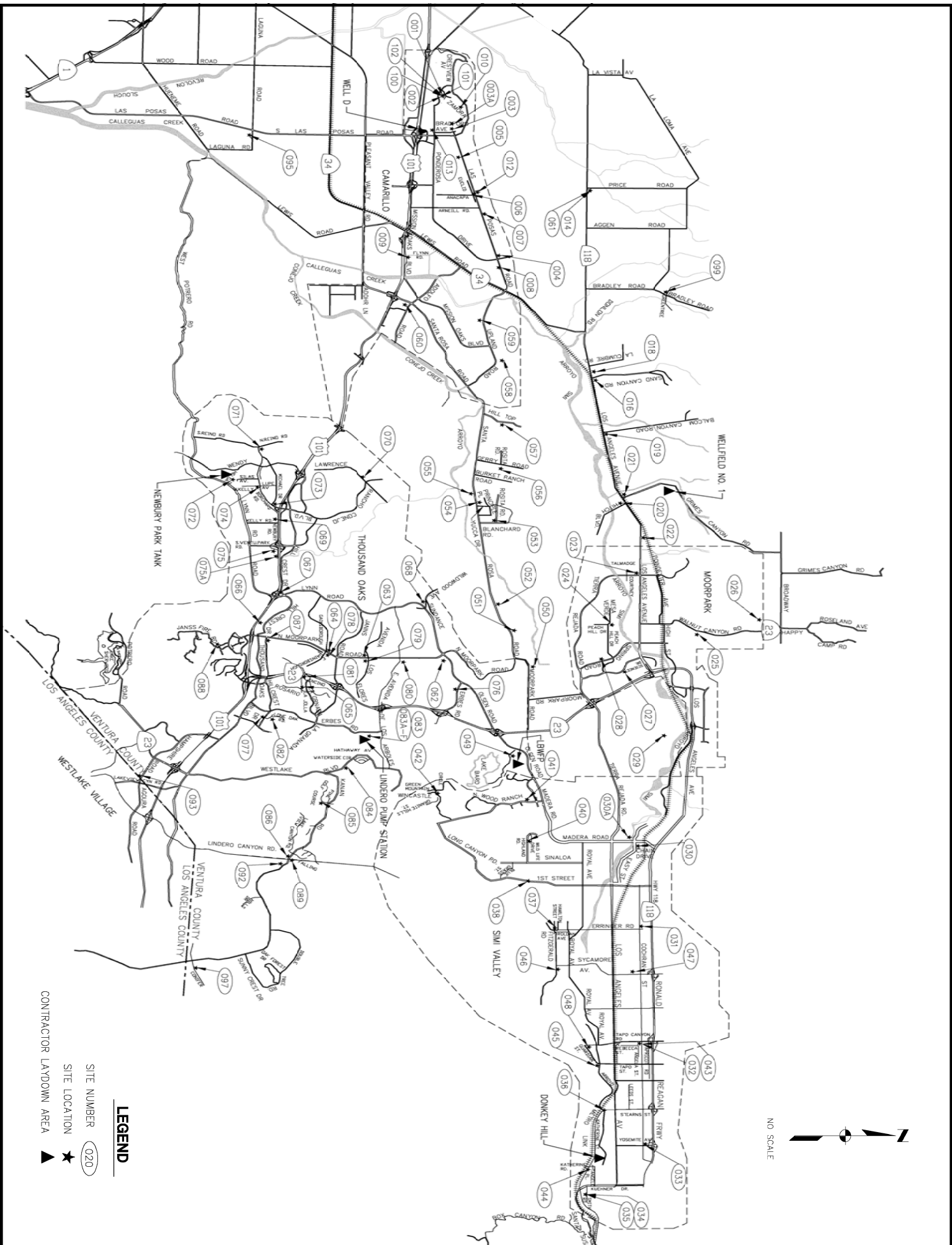
How to Get Updates or Provide Comments

Updates on construction activities will be available at www.calleguas.com or at the project hotline at (805) 579-7151. To speak to someone about the project, call the hotline and press "0." Any messages left on the hotline will be returned promptly.



Thank You for your Patience

Calleguas and its contractor will take all feasible steps to minimize construction impacts on the public. Calleguas appreciates the patience and understanding of local residents during the construction of this vital water supply project.



LEGEND

- 020 SITE NUMBER
- ★ SITE LOCATION
- ▲ CONTRACTOR LAYDOWN AREA

